

ALKAYAN Constructions



AL KAYAN
construction

E: AlaaAnwar@Alkayan.com.eg

w: www.alkayan.com.eg

New cairo,5thTagamoa,alandalos2/2,B168



CONSTRUCTION **PROJECTS** MANGEMENTS



COMPANY PROFILE

Al-Kayan Contracting Company is a leading construction firm specializing in general contracting and integrated finishing works. With a proven track record in delivering high-quality infrastructure, residential, and commercial projects, the company is committed to excellence, safety, and on-time delivery. Its strong reputation has earned the trust of both public and private sector clients.

Our Vision:

To lead in providing innovative construction solutions that enhance urban living and meet the evolving needs of the market.

Our Mission:

To deliver high-quality, reliable, and professional contracting services that exceed client expectations and contribute to sustainable development.



TABLE OF PROJECTS

Leveling and excavation Rafil	01
Ayan Villas	02
Yacht Marina Villas	03
Clinics and shops in Gardenia	04
Gardenia Residintial Buildings	05
Upgrading the Ismailia Insurance	06
Upgrading the Shubra Insurance	07
Horse stables buildings	08
Golf buildings in the New Capital	10
swimming pool	11
Swimming Pool Services Building	12
General location and ladder	14
boiler,Electricity and gas rooms	15
Karma Club Chalets Restoration	16
Administrative area wall	17
Childhood nurseries in Gharbia	18
Badr residential buildings	19

Alkayan Company

About Us

Alkayan Company is a leading construction and engineering firm committed to delivering high-quality projects with precision, innovation, and excellence. With a proven track record in residential, commercial, and institutional projects, we specialize in providing integrated solutions that cover the full project lifecycle — from concept and design to execution and finishing.

Our Expertis

Construction & Structural Works - Foundations, concrete structures, and complete building solutions.

Finishing Works - Marble, stone, tiling, painting, and high-end interiors.

MEP Systems - Electrical, mechanical, plumbing, HVAC, gas, and boiler installations.

Renovation & Upgrading - Efficiency upgrades, structural strengthening, and full-scale refurbishments.

Landscaping & External Works - Interlock, plantations, green areas, and site development.

Why Choose Us

Experienced team of engineers, architects, and skilled technicians.

Commitment to international safety and quality standards.

Timely delivery with precision in every stage.

Ability to handle integrated turnkey projects from A to Z.

Our Team

At Alkayan, our success is driven by a multidisciplinary team of site engineers, architects, supervisors, and skilled technicians who work together to ensure every project meets the highest standards. From structural accuracy to refined details, our team reflects dedication, professionalism, and innovation.

Contact Us

We would be delighted to hear from you. For inquiries, collaborations, or project discussions, our team is always ready to provide support and solutions tailored to your needs. Get in touch today and let's build the future together.

A Word of Thanks

We would be delighted to hear from you. For inquiries, collaborations, or project discussions, our team is always ready to provide support and solutions tailored to your needs. Get in touch today and let's build the future together.

Ayan Villa development featuring modern Ayan project

Project manager
Karim Asal

Elkayan Company Project Team Excellence

Our company has exceptional capabilities in executing projects with unmatched precision, speed, and quality. With a highly skilled engineering team, advanced construction technologies, and a commitment to excellence, we consistently deliver projects that exceed client expectations. From concept to completion, we handle every stage with meticulous planning, rigorous quality control, and innovative solutions, ensuring timely delivery and world-class results."

"Ayan Villas is a premium residential development featuring modern-designed villas built to the highest quality standards. The work begins with site preparation and excavation, followed by casting reinforced concrete foundations, constructing columns and slabs, completing blockwork, thermal and damp-proofing, and installing plumbing, electrical, and HVAC systems with precision. The project concludes with superior interior and exterior finishes, including plastering, painting, and decorative stonework."



Site excavation and preparation

Clearing and leveling the site to establish precise reference points for construction.



Casting reinforced foundations

Laying strong reinforced concrete foundations to ensure structural stability.



Constructing concrete columns

Erecting reinforced concrete columns and slabs in strict compliance with structural plans.



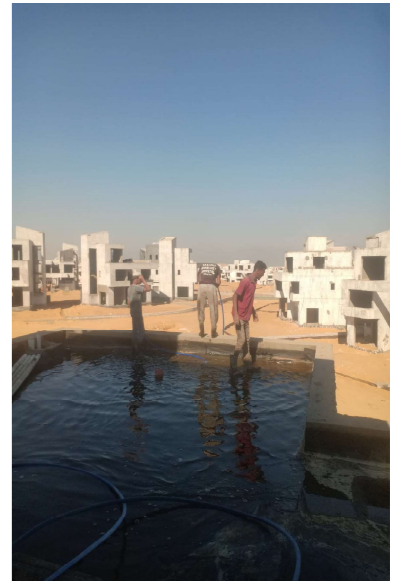
Blockwork and insulation installation

Building block walls with thermal and damp-proof insulation for maximum protection.



Exterior façade finishing

Applying plaster, paint, and decorative stonework for a premium exterior look.



Final site view after structure completion

Completed structure showcasing quality workmanship and attention to detail.

Yacht Marina Villas

Yacht Marina

Project manager
Mohamed Mokhtar

Elkayan Company Project Team Excellence

"In the Yacht Marina Villas project, our company successfully adapted to the challenging site conditions, applying innovative solutions to ensure seamless progress. Through the expertise of our skilled team and strict quality control, we delivered the structure with exceptional durability, safety, and premium finishing standards."

The Yacht Marina Villas project is an exclusive waterfront residential development that redefines luxury living. Strategically located to offer breathtaking views of the marina, the project features a collection of meticulously designed villas that combine contemporary architecture with timeless elegance.

From the earliest stages, our team implemented precise planning and innovative engineering solutions to adapt to the site's unique conditions. Every stage of construction was carried out with the highest quality standards, ensuring structural integrity, durability, and exceptional finishing.

*Each villa offers spacious layouts, premium materials, and modern amenities that provide residents with both comfort and style. The project reflects our commitment to excellence, attention to detail, and our ability to deliver world-class developments that exceed expectations.***



Site Preparation

Clearing and leveling the land to create a perfect base for construction

Strong Foundations

Building reinforced concrete foundations to ensure strength and stability



Structural Works

Erecting columns and slabs with precision and quality control



Exterior Finishing

Applying premium finishes that reflect elegance and durability.

Project Completion

A modern architectural masterpiece overlooking the marina



Expert Team

A dedicated team of engineers and workers delivering excellence at every stage.

Clinic And Shops Gardinia

Project manager
Mohamed Abdulkader

Elkayan Company
Project Team
Excellence

Our team combined engineering expertise with an understanding of commercial and healthcare requirements. Structural engineers ensured safety and stability, architects designed flexible layouts for clinics and shops, and finishing crews executed with precision to create modern and welcoming spaces. The management team coordinated all



The Gardinia Clinics and Shops Project is a fully integrated commercial and medical development designed to serve the community with modern, functional, and accessible facilities. The project includes well-structured medical clinics that provide a safe and comfortable environment for healthcare services, alongside a variety of retail shops that meet residents' daily needs. Construction works began with solid foundations and reinforced structures, ensuring long-term durability. Elegant façades, advanced roofing and drainage systems, and high-quality finishes reflect both professionalism and modern design. The project is completed with organized landscaping and pedestrian-friendly areas that enhance the overall user experience.

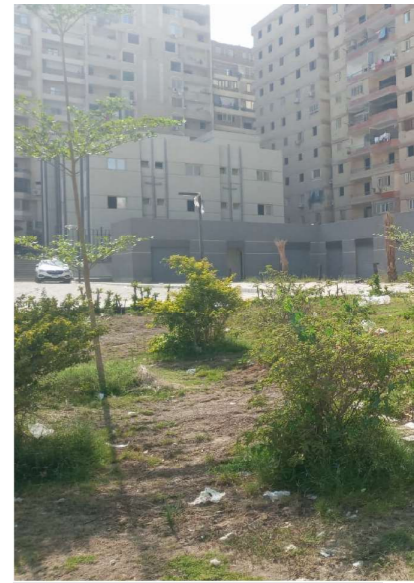


Site Preparation

Clearing and leveling the land to create a perfect base for construction

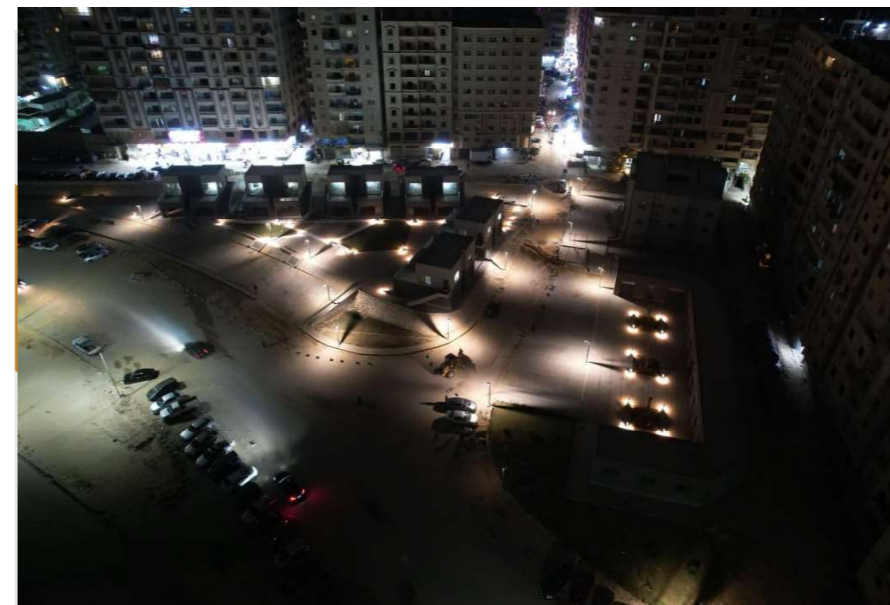
Strong Foundations

Building reinforced concrete foundations to ensure strength and stability



Structural Works

Erecting columns and slabs with precision and quality control



Exterior Finishing

Applying premium finishes that reflect elegance and durability.

Project Completion

A modern architectural masterpiece overlooking the marina



Expert Team

A dedicated team of engineers and workers delivering excellence at every stage.

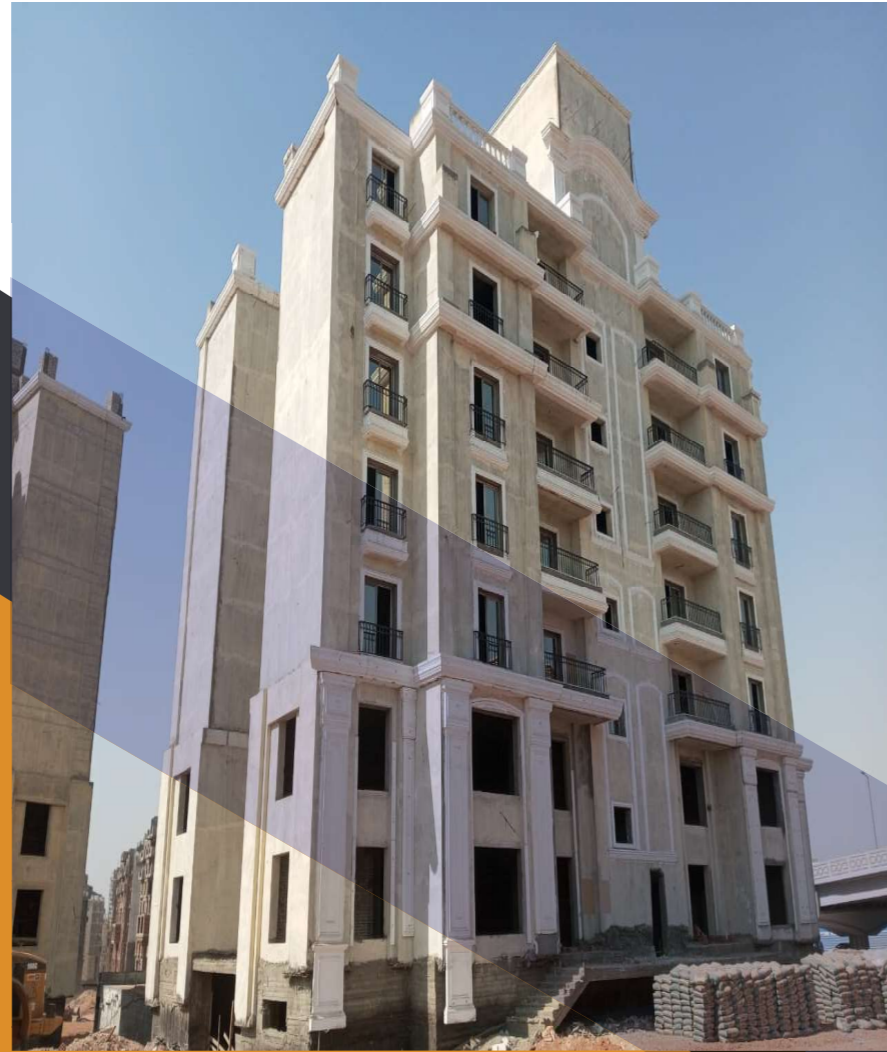
Residential Building Gardinia

Project manager
Tamer Elpagory

Elkayan Company Project Team Excellence

Our professional team played a vital role in turning the Golf Residential Buildings Project into a reality. Site engineers ensured the accuracy of structural works, architects developed modern and elegant designs, and skilled technicians executed the finishes with precision. The landscaping and service teams added the final touches that shaped the project

The Golf Residential Buildings Project is a fully integrated development designed to deliver modern, sustainable, and high-quality housing. The project covers all construction phases, starting from precise earthworks and reinforced foundations, through robust structural framing, and up to architectural finishes. The façades were executed with elegant designs that combine durability and aesthetics, while advanced roofing and drainage systems ensure long-term comfort and efficiency. Interior and exterior finishes highlight luxury and functionality, complemented by well-planned landscaping that creates a green and welcoming environment for residents.

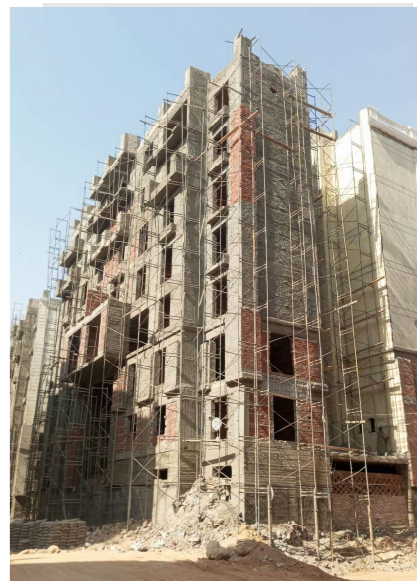


Site Preparation

Clearing and leveling the land to create a perfect base for construction

Strong Foundations

Building reinforced concrete foundations to ensure strength and stability



Structural Works

Erecting columns and slabs with precision and quality control



Exterior Finishing

Applying premium finishes that reflect elegance and durability.

Project Completion

A modern architectural masterpiece overlooking the marina



Expert Team

A dedicated team of engineers and workers delivering excellence at every stage.

Leveling And Excavation

Rafil

Senior Site Engineer
Ahmed Ezzat

Elkayan Company
Surveying Team
Excellence

Our surveying team is one of the cornerstones of our company's success.

With a combination of advanced equipment, deep technical knowledge, and years of field experience, our surveyors ensure unmatched precision in every stage of the project.

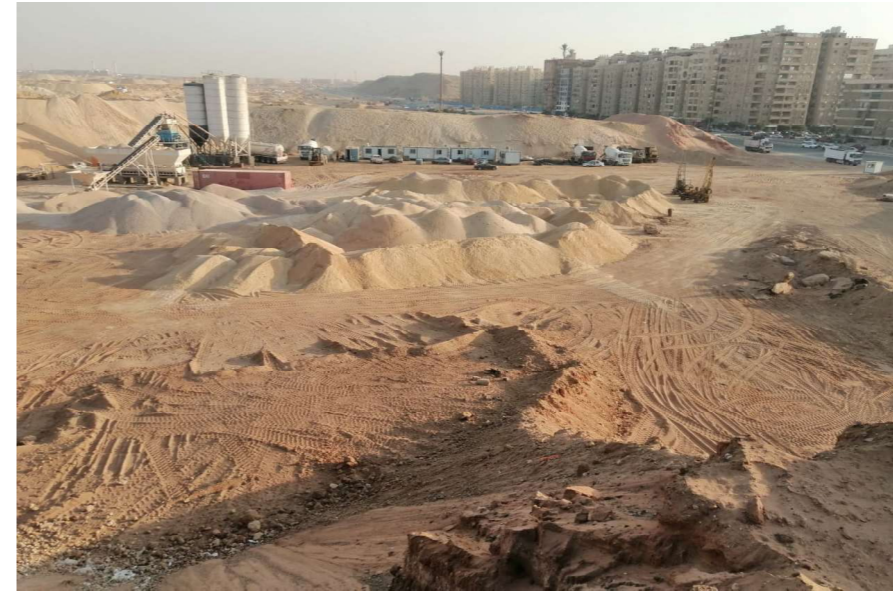
From initial site assessments and topographic mapping to layout marking and level control, they deliver accurate data that forms the foundation for all construction activities. Their attention to detail and commitment to quality play a critical role in minimizing errors, reducing rework, and keeping the project on schedule.

Our team is not only highly skilled but also deeply familiar with the latest surveying technologies – including GPS-based systems, total stations, and laser levels – making them capable of handling even the most complex site conditions with confidence and efficiency.



The Rafil Leveling and Excavation Project stands as a testament to our company's commitment to excellence, precision, and engineering efficiency. This project marked the first and most critical stage of development, laying the groundwork for all future structural operations.

The work commenced with a comprehensive topographic and geotechnical site assessment, conducted by our expert surveying team. Using state-of-the-art equipment, such as total stations, GPS systems, and laser levels, the team accurately mapped the terrain and defined excavation boundaries. This data formed the blueprint for the excavation and leveling phases that followed.



Project Execution Stages:

Site Preparation and Debris Removal
Clearing the area and removing debris to begin excavation



Foundation Leveling Work

Leveling the ground to prepare for foundation construction.

Soil Compaction and Moisture Control

Compacting the soil and managing moisture levels to ensure ground



Deep Excavation Operations

Operating heavy machinery to carry out deep and precise excavation



Final Grading before Structural Works

Final ground grading completed before starting structural work.

Upgrading Ismailia Insurance

Senior Site Engineer
MAhמוד Kaled
Elkayan Company
Surveying Team
Excellence



Our specialized team delivered this renovation project with precision and professionalism. Engineers ensured the structural integrity of the existing building, while the architectural team redesigned spaces to be both functional and visually appealing. Skilled technicians managed the upgrades to building systems, and finishing crews executed high-standard details that gave the building a new life. The collaboration reflects the company's ability to raise the efficiency of facilities while maintaining quality and timeliness.

The Ismailia Social Insurance Building Project is a comprehensive renovation and upgrading initiative aimed at enhancing efficiency, safety, and user comfort. The project focused on strengthening the existing structure, modernizing façades, and upgrading internal systems to meet contemporary standards. Works included renewing mechanical, electrical, and plumbing systems, improving insulation and drainage, and applying high-quality interior and exterior finishes. The result is a modern, functional building that provides improved services and a better environment for both employees and visitors.



Structural Upgrading

Strengthening the existing building for long-term durability

Façade Renovation

A modern look with improved performance

Systems Upgrade

Advanced MEP systems for better efficiency



Main Power Supply & Panels

Reliable systems for safe energy distribution

Low-Current Systems - Fire alarms

Fire alarms, data, and communication networks

Interior Finishes

High-quality details for comfort and functionality



Upgrading Shubra Insurance

Senior Site Engineer
Mohamed Kabib

Elkayan Company
Surveying Team
Excellence

Our expert team successfully delivered the project with a high level of professionalism. Structural engineers ensured the stability of the existing framework, while the architectural team redefined the spaces to improve workflow and aesthetics. Electrical and mechanical engineers installed upgraded systems for efficiency and safety, and the finishing crews completed the project with precision and attention to detail. This coordinated effort highlights the company's ability to revitalize existing facilities into modern, high-performing assets.

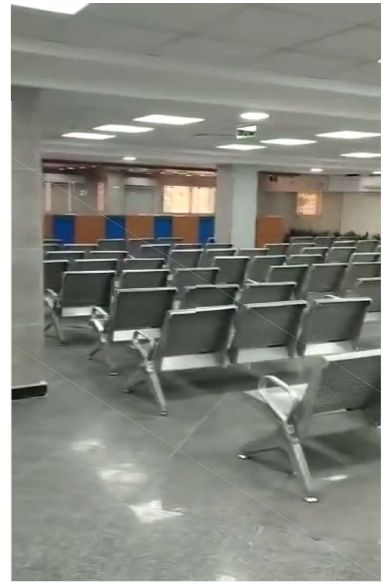


The Shoubra Social Insurance Building Project is a full renovation and efficiency-upgrading initiative. The works aimed to modernize the building, improve functionality, and enhance the comfort of both staff and visitors. The project scope included structural strengthening where needed, refurbishment of façades, and comprehensive upgrades of mechanical, electrical, and plumbing systems. Interior and exterior finishes were renewed to align with modern standards, creating a professional and efficient environment. This upgrade ensures the building continues to provide reliable services while reflecting a modern and sustainable image.



Structural Upgrading

Strengthening the existing building for long-term durability

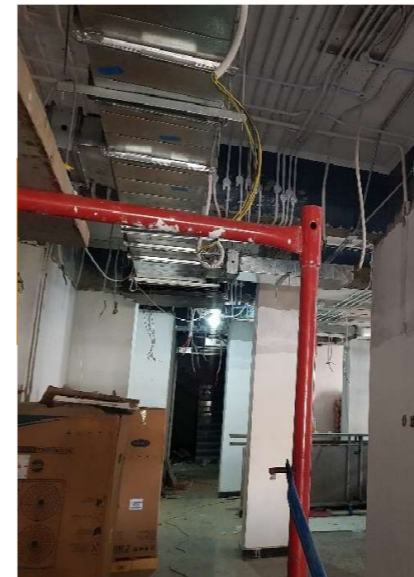


Façade Renovation

A modern look with improved performance

Systems Upgrade

Advanced MEP systems for better efficiency



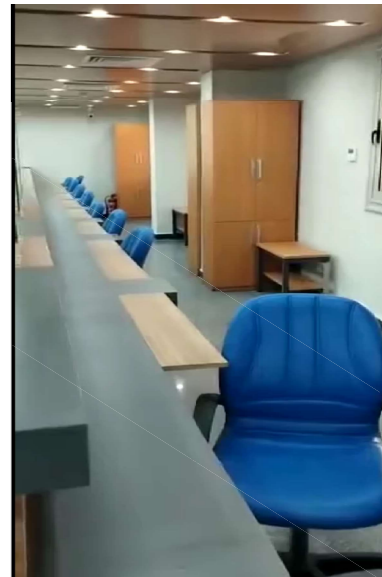
Main Power Supply & Panels

Reliable systems for safe energy distribution



Low-Current Systems – Fire alarms

Fire alarms, data, and communication networks



Interior Finishes

High-quality details for comfort and functionality

Horse Stables Building

Administrative Capital



The Horse Stables Residential Buildings Project is a fully integrated development that extends from initial earthworks to the final stages of finishing. The project reflects a commitment to delivering high-quality housing solutions with precision at every step. Starting with site excavation and soil preparation, the team established a strong foundation to guarantee durability. Structural framing with reinforced concrete was executed with strict adherence to engineering standards. The external façades were designed to blend strength with elegance, while advanced roofing and drainage systems ensure sustainability. Finishing works, including premium stone cladding and modern interiors, showcase luxury and practicality. This comprehensive approach makes the project a complete residential land-



Earthworks & Excavation

Laying the groundwork for a solid structure

Foundations & Concrete Works

Strength and safety as a priority



Structural Framing

Reinforced concrete for long-lasting durability



Facade Execution

Elegant designs with modern finishes

Roofing & Drainage Systems

Sustainable and efficient solutions



Interior & Exterior Finishes

Luxury that reflects attention to detail

Golf Building Administrative Capital

Senior Site Engineer
Ahmed Ezzat

Elkayan Company
Surveying Team
Excellence

Our engineering and construction team demonstrated exceptional expertise in delivering this project. From skilled site engineers supervising excavation and structural works, to experienced architects shaping the project's identity, every phase was executed with precision. The finishing crews, facade specialists, and landscaping professionals all worked together to achieve a flawless outcome that reflects the company's commitment to quality and excellence.



The project consists of modern residential buildings located in the heart of the New Administrative Capital. Works began with precise site excavation and foundation setting to ensure long-term structural stability. Reinforced concrete framing was executed to provide durability and safety, followed by the installation of elegant external façades that highlight the architectural identity of the project. The buildings are equipped with insulated roofing and efficient drainage systems to guarantee comfort and sustainability. Finishing works include high-quality interior details and refined stone cladding that reflect both luxury and practicality. Finally, landscaping around the building perimeters has been designed to create a



Lorem ipsum

Excavation & Foundation Works

Establishing a strong base for long-term stability



Insulated Roofing & Drainage

Comfort and sustainability at the core

Structural Concrete Framing

Ensuring durability and safety



Architectural Finishes & Stonework

Luxury crafted with precision



Facade Installation

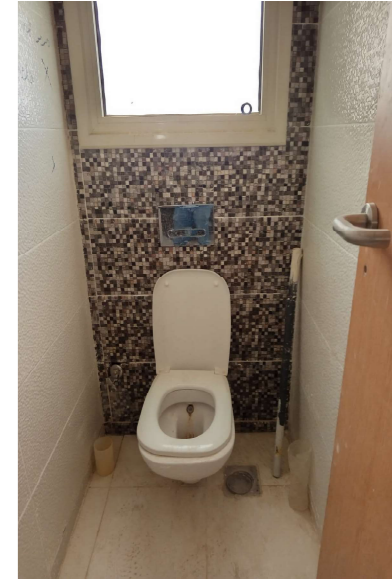
Modern designs with elegant finishes



Landscaping

Green spaces that complete the living experience

Swming Pool Services Senior Leader Club



Structural Renovation

Restoring strength and durability

Finishing Works

Modern interiors and high-quality details

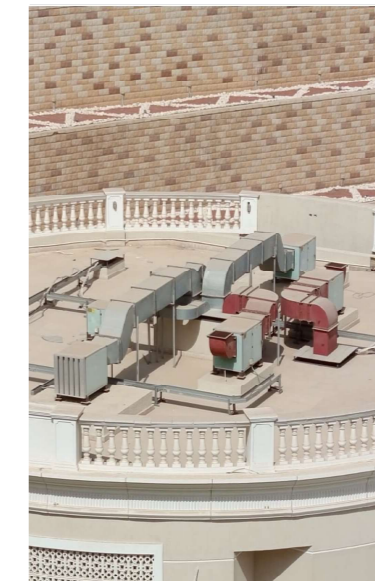
Electrical Systems

Safe, efficient, and reliable installations



Plumbing Networks

Advanced solutions for water and drainage



Exterior Upgrades

A refreshed look that enhances the facility



Low-Current Systems

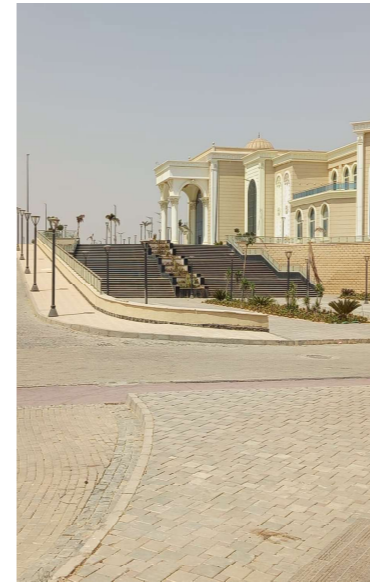
Fire alarms, data, and communication networks

The Swimming Pool Services Building at the Senior Leaders Club is a comprehensive renovation and finishing project that aimed to modernize and upgrade the facility. The works included structural repairs, complete finishing, and full renovation of the interiors and exteriors. In addition, new electrical and plumbing systems were installed to ensure safety, efficiency, and sustainability. The project delivered a modern, functional, and comfortable services building that enhances the overall swimming pool facilities and meets the needs of the club's members.

General Location and Ladder Senior Leader Club



The General Site and Staircase Project is a fully integrated development combining structural works, marble finishes, landscaping, and external site coordination. The project included the execution of reinforced concrete works and staircases, followed by elegant marble cladding that reflects durability and luxury. Landscaping elements were introduced through interlock paving for pathways and open areas, complemented by well-planned greenery and plantations that enhance the environment. The result is a harmonious blend of functionality, aesthetics, and sustainability that upgrades the entire site.



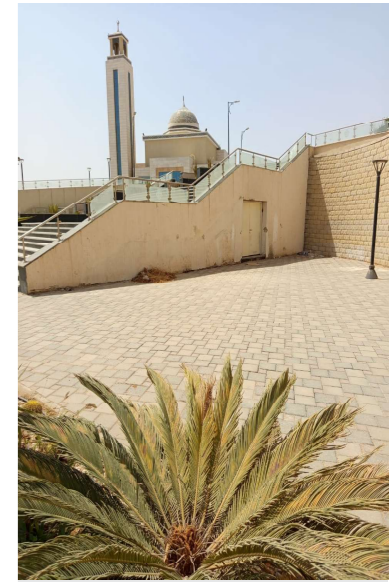
Structural & Staircase Works

Strong and precise construction



Marble Finishes

Luxury and durability in every detail



Interlock Paving

Functional and aesthetic landscaping solutions



Greenery & Plantations

Creating a natural and welcoming environment

Complete Site Coordination

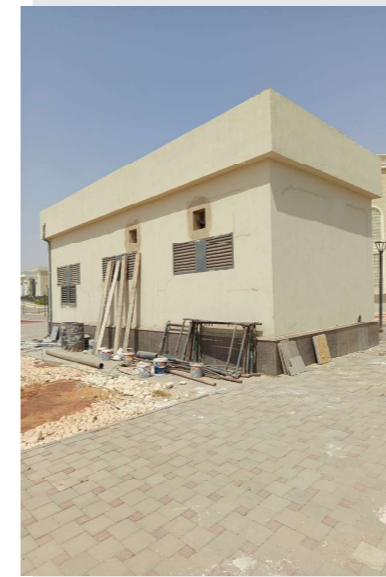
Blending structure, beauty, and sustainability



Green Lawns & Open Spaces

Creating refreshing and relaxing areas

Boller, Electricity and Gas Room Senior Leader Club



Electrical Room

Safe and reliable power distribution



Gas Supply Room

Secure systems with advanced safety controls

Boiler Room

Modern heating and hot water solutions



Integrated MEP Works

Coordinated systems for efficiency



Reinforced Structures

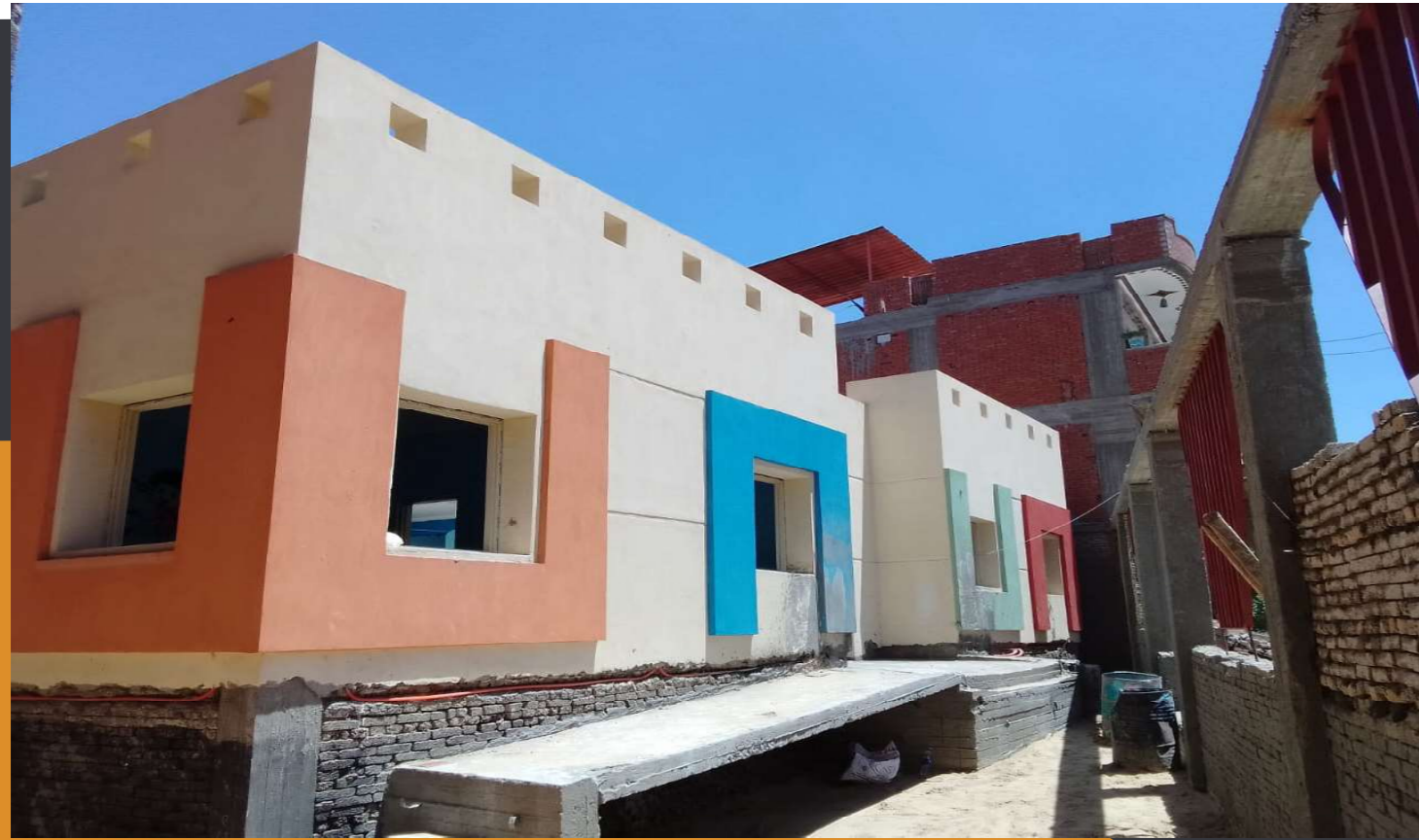
Protecting essential service facilities

Protective Devices

Safety measures against overloads and faults

The Electrical, Gas, and Boiler Rooms Project at the Senior Leaders Club was executed as part of the facility's infrastructure upgrading works. The project included the construction of reinforced service rooms to house the main electrical panels, distribution boards, gas supply systems, and modern boiler units. All installations were carried out according to the highest safety and engineering standards to ensure reliability, operational efficiency, and sustainability. This development guarantees uninterrupted services, secure energy supply, and comfort for the club's members.

Childhood Nurseries Gharbia Governorate



The Gharbia Nurseries Project is a fully integrated development dedicated to early childhood education and care. Designed with a focus on safety, functionality, and creativity, the project provides a nurturing environment that supports children's growth and learning. From earthworks and foundation setting to the final architectural finishes, every phase was executed with precision and high standards. The facilities include child-friendly classrooms, safe outdoor play areas, and modern service spaces that enhance the overall educational experience. This project reflects the company's vision of contributing to community development through state-of-the-art facilities for children.



Earthworks & Excavation

Laying the groundwork for a solid structure



Foundations & Concrete Works

Strength and safety as a priority

Structural Framing

Reinforced concrete for long-lasting durability

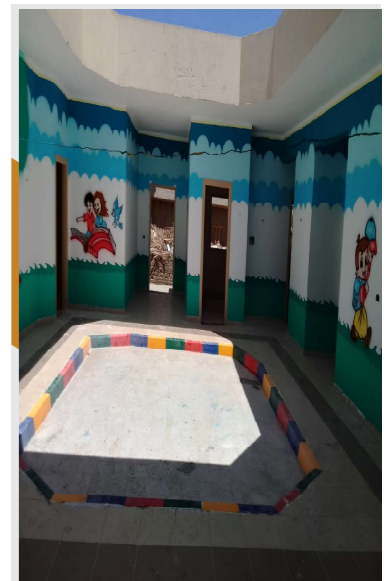


Facade Execution

Elegant designs with modern finishes

Roofing & Drainage Systems

Sustainable and efficient solutions



Interior & Exterior Finishes

Luxury that reflects attention to detail

Badr Residential Bilding

TEAM

Lorem ipsum



The Badr City Residential Buildings Project is a fully integrated development that covers all construction stages, from initial earthworks to complete architectural finishes. The project was designed to provide modern, durable, and comfortable housing solutions that meet the growing needs of the community. Starting with precise excavation and reinforced foundations, the buildings were constructed using strong structural framing to ensure safety and stability. Elegant façades, efficient roofing, and advanced drainage systems enhance the project's quality. High-end finishes, along with well-planned landscaping, create a balanced environment that combines functionality, aesthetics, and sustainability.



Site Preparation & Excavation

Building on strong foundations

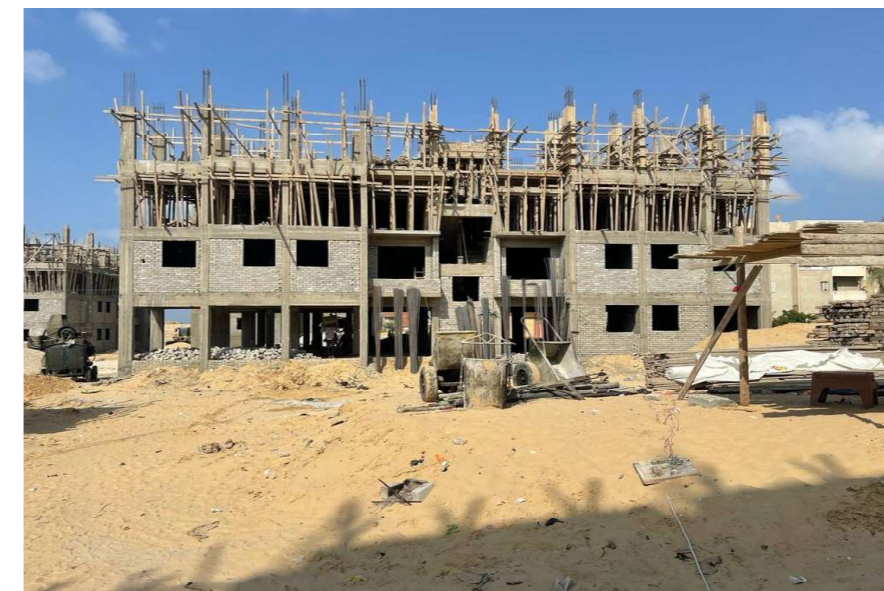


Structural Works

Reinforced concrete for safety and durability

Façade Execution

Elegant designs that shape the city's identity



Roofing & Drainage

Modern systems for comfort and efficiency

Interior & Exterior Finishes

High-quality details for modern living



Landscaping

Green surroundings that complete the community experience